



Marine Develop **Marvel**

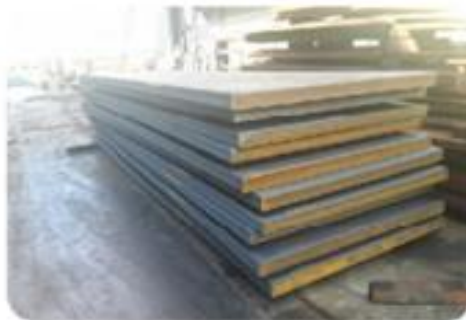


<http://www.marinedevelop.co.kr/>

Featured Products

• Plate

	MAKER : POSCO, Dongkuk, Hyundai, Japan, Europe.
Carbon Steel (Marine Structure)	SA516, SA537, SA299, SA302, SA204, SA533-B, AB/AH36, AB/DH36, S355M, S460M etc.
Low Alloy Steel	SA387-5, SA387-11, SA387-22, SA387-91, HASTELLOY, INCONEL etc.
Stainless Steel	SA240-304(L), 316(L), 321, 347, 410(S), 904(L), S31803, S32205, S32750, etc.
Titanium Steel	SB265-Gr.1, 2, 7, 12



Featured Products

• Tubes and Pipes

Heat Exchanger Tubes

Grade	Stainless Steel	304/304L 316/316L 316T1 310S 317L 321/321H 347/347H 410S S31803 S32750
	Alloy & Carbon Steel	A213-T11 ~ T91 A210 A179 A178
	Special Steel	Inconel600 Inconel625 incoloy800 Incoloy825 Monel & Others
Applicable Standards	ASTM ASME AISI DIN JIS	
Product Specifications	Out Diameter	2.0mm ~ 88.9mm
	Wall Thickness	0.3mm ~ 8.0mm
	Maximum Length	32 meters
Main product specifications.	Out Diameter	31.75mm 25.40mm 19.05mm 15.88mm 12.70mm 9.53mm 6.35mm
	Wall Thickness	2.77mm .41mm 2.11mm 1.65mm 1.24mm 0.89mm
Products to which it applies	Heat Exchanger, Boiler, Atomic Power Plant, Desalination Plant, Condenser, Super Heater	



Featured Products

• • Tubes and Pipes

Stainless precision tubing

Grade	Stainless Steel	304/304L 316/316L 316T1 310S 317L 321/321H 347/347H 410S S31803 S32750
	Special Steel	Inconel600 Inconel625 incoloy800 Incoloy825 Monel & Others
ASTM ASME AISI DIN JIS		
Applicable Standards	Seamless / Semi-Seamless Tube	
Product Specifications	Inner Diameter	1.0mm ~ 88.0mm
	Wall Thickness	0.05mm ~ 8.0mm
Products to which it applies	Precision Cylinder	· Gas Cylinder · Air Cylinder · Oil Cylinder
	Precision Parts	Fine Electric & Electronic Parts, Medical Appliance, Bending Machine, Compressor, Fitting, Tubing, Automobile Parts, Measurement Appliance, Precise Shaft & Roller
	Sepcial Parts	Semi-conductor, Transportation Line, Ship Building, Aero Space Industry



Featured Products

TUBE AND PIPE

STAINLESS TUBES



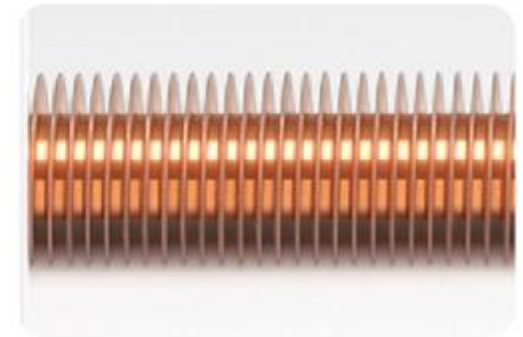
Featured Products

TUBE AND PIPE

U BENDING TUBES



FINNED TUBE



Featured Products

FLANGES

STANDARD



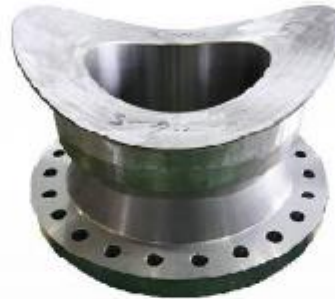
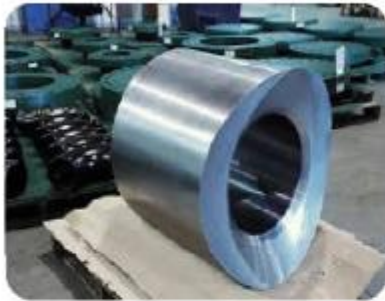
NON-STANDARD



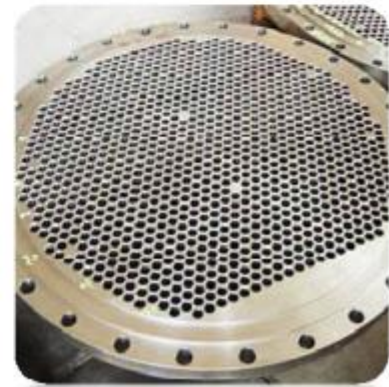
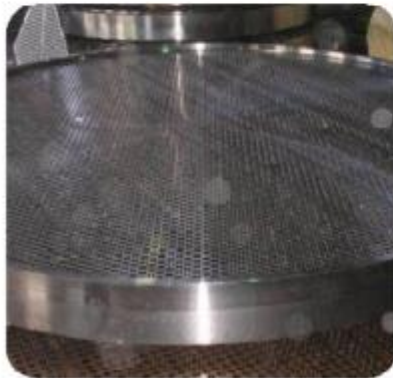
Featured Products

FORGED ITEMS & TUBE SHEET

FORGED ITEMS



TUBE SHEET



Featured Products

Special Material



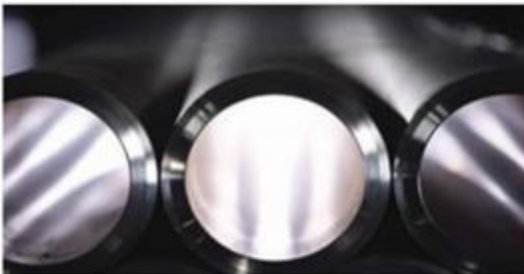
Special Casting



Flange



Solid CRA Pipes



Alloy / CRA



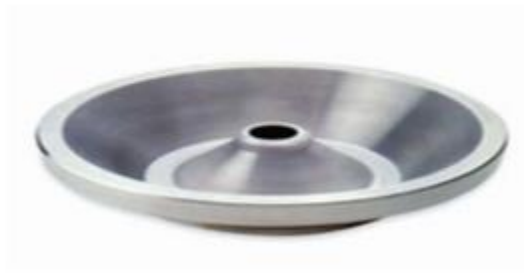
High Pressure Fittings



Pelton Rad, Impeller



Specialty Items



Spectacles, Spacers, Paddles



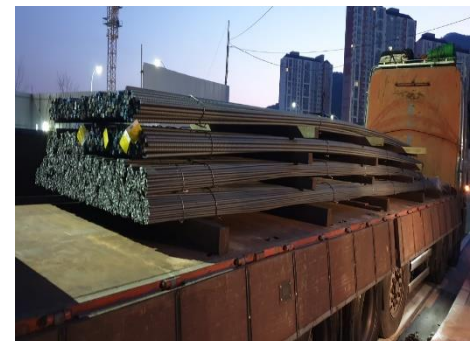
Major Deliverables

Forged Products



Major Deliverables

Plate, round bar, pipe, etc.

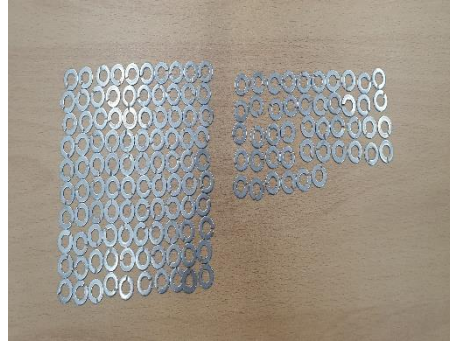
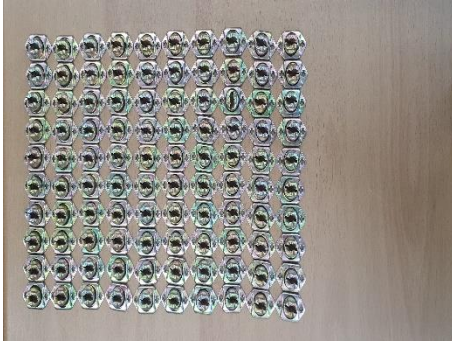


Major Deliverables

Plate, round bar, etc.



Specialty fasteners



Major Deliverables

Other products



Filter



Electronic control product



Product spare part



Ball Valve



Battery



Rubber roll



Major Deliverables

기타 제품



Connector Pin



Valve



CONTACT US

Have any inquiries about Marine Develop Marvel Co., Ltd?
If you make an inquiry to one of the relevant departments below, we will respond as soon as possible.
Tel : +82-55-853-9014 / Fax : +82-55-853-9015 / Email : mrd9014@daum.net

Marketing/Sales

Sales/Overseas/Marine Pension, Café/
Floating Structures (other than pontoons)

Manager Kim Yoo-bong CEO
Tel +82-55-853-9014
Mobile +82-10-7519-2562
Email mrd9014@daum.net

Marketing/Sales

Construction/Distribution/Overseas

Manager Song Byung-sung, General
Manager
Tel +82-55-853-9014
Mobile +82-10-3461-3419
Email mrd9014@daum.net

Production HQ

Blueprint/Design

Manager Baek Seung-woo, Director
Tel +82-55-853-9014
Mobile +82-10-2953-9660
Email mrd9014@daum.net

Production HQ

Production Management

Manager Kim Jong-sung, Plant manager
Tel +82-55-853-9014
Mobile +82-10-8544-7578
Email mrd9014@daum.net

CS

Customer Services

Manager Kim Nam-hee, Section chief
Tel +82-55-853-9014
Mobile +82-10-6828-0896
Email mrd9014@daum.net

R&D

R&D, Design and Development

Manager Kwon Dae-sam, Tim manager
Tel +82-55-853-9014
Mobile +82-10-9407-0760
Email mrd9014@daum.net

Thank You !!



Marine Develop **Marvel**